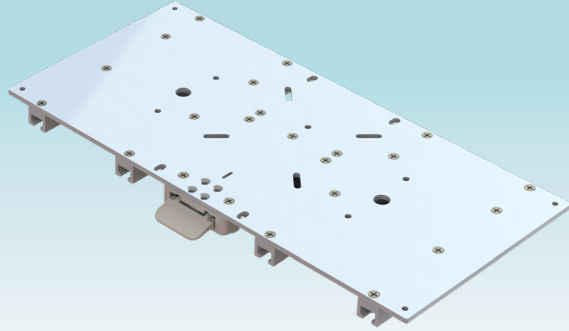




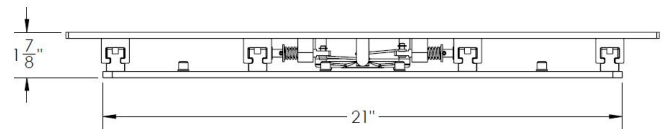
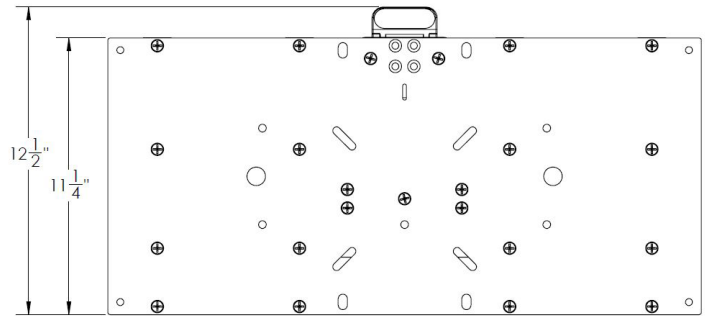
LOW PROFILE ADJUSTABLE SEAT SLIDE- M20-2411



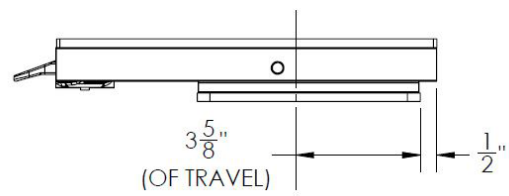
Introducing the newest addition to our seat slide family, the Low Profile Adjustable Seat Slide, 11-1/8" X 24"! This universal, low-profile design provides frictionless operation and is easily adaptable for a multitude of marine applications. Its high-strength polymer glides provide smooth movement with a durable locking action. It comes with a front-mounted activation lever, which is easily accessible in all five positions when seated.

FEATURES & BENEFITS

- Meets ABYC H31 testing standards
- Precision-machined 6000-series aluminum chassis
- Double pin positive side lock
- High-strength polymer glides provide self-lubricated, rattle-free, smooth operation
- Features five adjustable, equally spaced positions with 3-5/8" of travel
- Secure fit with universal mounting bolt pattern on box applications
- Front activation paddle that slides with the seat for ease of use
- Ideal for seats 29" to 40" wide
- Ideal seat length/depth is 12" to 14"



FULLY FORWARD

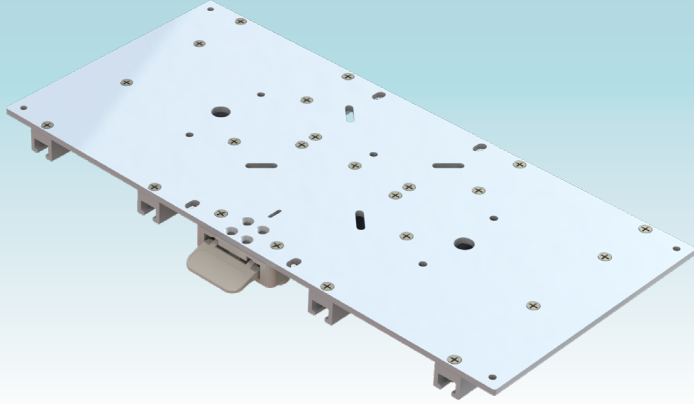


FULLY AFT

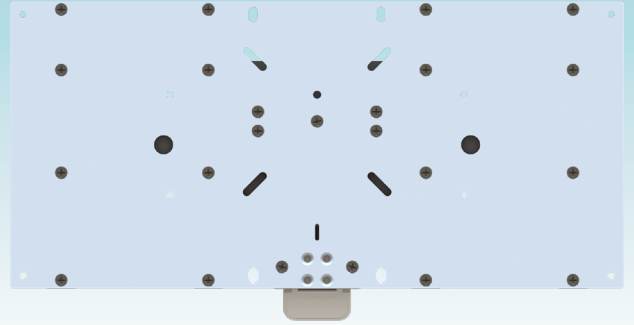


PART NUMBER	DESCRIPTION	HEIGHT	LENGTH	WIDTH	WEIGHT	UNIT	PACK
M20-2411	Low Profile Adjustable Seat Slide, 11-1/8" X 24"	1.85"	12.43"	24"	17.09 lbs.	EA	1





ISOMETRIC VIEW



TOP VIEW



SIDE VIEW